



FIRST THINGS FIRST

Ready for School. Set for Life.

aztf.gov

PUBLIC NOTICE OF MEETING OF THE Arizona Early Childhood Development & Health Board Yuma Regional Partnership Council

Pursuant to A.R.S. §8-1194(A) and A.R.S. §38-431.02, notice is hereby given to the members of the First Things First - Arizona Early Childhood Development & Health Board, the Yuma Regional Partnership Council, and to the general public that the Yuma Regional Partnership Council will hold a *Regular Meeting open to the public on Thursday, November 21, 2013, at 4:30 pm at the Sierra Vista Presbyterian Church, Fellowship Hall, 150 W. 28th Street, Yuma, Arizona 85364.* Some members of the Regional Partnership Council may elect to attend telephonically.

Pursuant to A.R.S. § 38-431.03(A) (1), A.R.S. § 38-431.03(A) (2) and A.R.S. § 38-431.03(A) (3), the Regional Partnership Council may vote to go into Executive Session, which will not be open to the public, to discuss personnel items, records exempt from public inspection and/or to obtain legal advice regarding any item on this agenda.

The Regional Partnership Council may hear items on the agenda out of order. The Regional Partnership Council may discuss, consider, or take action regarding any item on the agenda.

The Regional Partnership Council may elect to solicit public comment on certain agenda items.

The agenda for the meeting is as follows:

1. **Call to Order/Welcome/Introductions** Rev. Dr. Darren C. Hawkins, Chair
2. **Declarations of Conflict of Interest** Rev. Dr. Darren C. Hawkins, Chair
Members will address potential conflicts of interest regarding items on this agenda.
3. **Consent Agenda** Rev. Dr. Darren C. Hawkins, Chair
All items on the agenda that are in *italics, underlined,* and marked with an asterisk (*) are consent matters and will be considered by a single motion with no discussion. All other items will be considered individually. Any matter on the consent agenda will be removed from the consent agenda and discussed upon the request of any Council member.
A. * *Minutes of October 17, 2013 Yuma Regional Partnership Council Regular Meeting*
(Attachment 1)
4. **Update on Arizona Town Hall** Mary Beth Turner, Council Member
5. **Review and Discussion on Funding Plan Workgroup Recommendations** Rudy J. Ortiz, Regional Director
(Attachment 2) Gary P. Arnold, Sr. Regional Director
6. **Discussion and Possible Action on FY2015 Funding Plan** Rudy J. Ortiz, Regional Director
Gary P. Arnold, Sr. Regional Director
Council Members
7. **Awards and Recognition** Rudy J. Ortiz, Regional Director

8. Call to the Public

Rev. Dr. Darren C. Hawkins, Chair

This is the time for the public to comment. Members of the Council may not discuss or take legal action regarding matters that are not specifically identified on the agenda. Therefore, pursuant to A.R.S. §38-431.01(H), action taken as a result of public comment will be limited to directing staff to study the matter, responding to any criticism or scheduling the matter for further consideration and decision at a later date. Public comments relative to a specific agenda item may be heard during the discussion of that item.

9. Announcements

Rev. Dr. Darren C. Hawkins, Chair

10. Next Meeting

Rev. Dr. Darren C. Hawkins, Chair

Thursday, January 16, 2014, 4:30p.m.
Senior Citizen Center
790 E. Juan Sanchez Blvd., San Luis, AZ 85349

11. Adjourn

Rev. Dr. Darren C. Hawkins, Chair

A person with a disability may request a reasonable accommodation such as a sign language interpreter by contacting Marie Megui, Administrative Assistant III, Arizona Early Childhood Development Board-Yuma Regional Partnership Council, 233 S. 2nd Avenue, Yuma, Arizona 85364, by telephone at (928) 343-3020 or by email at mmegui@azftf.gov. Requests should be made as early as possible to allow time to arrange the accommodation.

Dated this 15th day of November 2013

**ARIZONA EARLY CHILDHOOD DEVELOPMENT & HEALTH BOARD
YUMA REGIONAL PARTNERSHIP COUNCIL**



Rudy J. Ortiz, Regional Director



FIRST THINGS FIRST

Ready for School. Set for Life.

Arizona Early Childhood Development & Health Board

Yuma Regional Partnership Council Meeting

Meeting Minutes

Welcome/Introductions/Call to Order

The regular meeting of the First Things First – Yuma Regional Partnership Council was held on October 17, 2013, 4:30 p.m. at the Harvest Preparatory Academy, 350 E. 18th Street, Yuma, Arizona 85364.

Vice Chair Garza called the meeting to order at 4:35 p.m.

Members Present:

Vice Chair Irene Garza
Member Laurie Gail Senko
Member Judy Watkinson
Member Kim Fanning
Member Mary Beth Turner
Member Dr. Mario Ybarra
Member Ricardo Perez

Members Present Via Conference Call:

Member Pilar Moreno

Members Absent:

Chair Darren Hawkins
Member Gloria Cisneros
Member Rebecca Ramirez

Conflict of Interest

Vice Chair Garza provided the Regional Council with an opportunity to declare any conflict of interest regarding items on the agenda. There were no conflicts declared at this time.

Consent Agenda

The items on the consent agenda included the minutes of the September 19, 2013, Yuma Regional Partnership Council regular meeting. A motion was made by Member Watkinson to approve the consent agenda, seconded by Member Turner, and the motion carried by a unanimous vote by all members present.

Discussion on FY2015 Allocation

Regional Director Rudy Ortiz provided a brief review of the FY2015 allocations. The allocation includes additional funds which are projected to be unexpended in FY2014. These funds equal 10% of the allotted dollars in FY 2014. This will allow regions to utilize these funds in planning for FY 2015.

Discussion on School Readiness Benchmarks

First Things First Evaluation Consultant, Amy Kemp, engaged the Regional Council on a discussion regarding the School Readiness Benchmarks. Indicator #3: #/% of children with special needs/rights enrolled in an inclusive early care and education program with a Quality First rating of 3-5 stars and the process/source used to collect the data was the main focus of the discussion. The intent of the indicator is to increase the number of children with special needs/rights who enroll in a high quality inclusive regulated early learning program. Ms. Kemp provided a review of the Quality First Star Rating System.

A motion was made by Member Turner to approve the preliminary benchmarks for Indicator #3 at 75%, (percentage of children with special needs/rights enrolled in an inclusive early care and education program with a Quality First rating of 3-5 stars), seconded by Member Fanning, and the motion carried by a unanimous vote by all members present.

Discussion on 2014 Needs and Assets Report

Regional Director Rudy J. Ortiz provided a brief report on the status of the 2014 Needs and Assets Report. University of Arizona Norton School of Family and Consumer Sciences, the assigned vendor to collect the data for the report, will conduct key informant interviews to collect data necessary as required by the Regional Council. The key informants chosen will provide feedback on the area of Early Learning, Health and Family Support.

Discussion on Yuma Community Food Bank Food Vouchers

The Regional Council engaged in a discussion on the food vouchers and food backpacks provided by the Yuma Community Food Bank through First Things First Funding.

A motion was made by Member Watkinson to approve an additional \$12,900 to the Food Security Strategy, adding a minimum of 516 vouchers to SFY14 (total of 1,266), seconded by Member Moreno, and the motion carried by a unanimous vote by all members present.

Presentation by Arizona Department of Education

Early Childhood Program Specialist of Arizona Department of Education (ADE), Alison Keough, shared a brief update on the current accomplishments and trainings by ADE in the region.

Presentation by Western Arizona Council of Governments

Deb Hanney, Head Start Director of Western Arizona Council of Governments (WACOG), shared information literature on the agencies primary focus/goals and intent. WACOG collaborates with other agencies in the region that assist in providing services for families in the community.

Debrief on Chair/Vice Chair Forum

The Chair/Vice Chair Forum was held on October 10, Phoenix, AZ. Topics of discussion at the forum included but were not limited to: the FY 2015 allocations to regional councils by the state board, funding plan, budgets, public and private partnerships and the council surveys.

Regional Director's Report

- 1) System Building:
 - Outcomes of the Family Support/Home Visitation Collaboration October 8 meeting on. Overcoming barriers/making impact in the community.
 - Health/Community of Practice-Statewide Grant SFY14.
- 2) Grantee Update:
 - Celebration of Quality First 3 star centers at the November 21, 2013 Regional Council Meeting.
 - Resource Guide: in the final stages. Official copy will be available in December 2013.

Update on Community Outreach Plan-Engaging Business Community

At a previous meeting the Community Outreach Plan workgroup identified tools/resources and messages that will assist in reaching out to the business community. Items identified will be collected a draft will be created and provided to Council Member Perez for review.

Debrief on Desert Mesa Site Tour

Nena Garcia, Community Outreach Coordinator shared a brief update on the Desert Mesa Site Tour, held on September 24, 2013.

Call to the Public

There was no response to the Call to the Public at this time.

Announcements

None at this time.

Next Meeting

The next regular meeting of the Yuma Regional Partnership Council is scheduled on November 21,, 2013, 4:30 p.m., Sierra Vista Presbyterian Church, 150 W. 28th Street, Yuma, Arizona 85364.

Adjourn

There being no further business the meeting adjourned at 6:50 p.m.

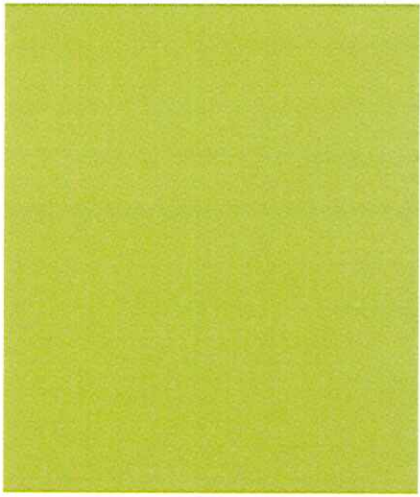
SUBMITTED BY:

Marie Megui, Administrative Assistant III

APPROVED BY:

Irene Garza, Yuma Regional Partnership Council Vice Chair

November 21st, 2013



Yuma Regional Partnership Council

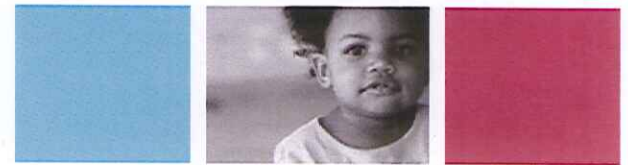
State Fiscal Year 2015
Funding Plan Work Group



FIRST THINGS FIRST

The Process

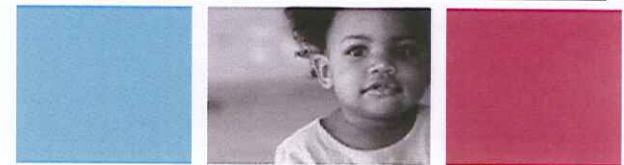
- Review 2014 Funding Plan
- Review Priorities and Indicators
- Use insight from Harvard University Video “Early Childhood Program Effectiveness”
– Investment!
- Report at November meeting and possible action.



FY15 Funding Plan

Regional Priorities, Selected FTF Indicators and Priority Roles, and Strategies to Achieve Outcomes

Regional Priority to be addressed	School Readiness Indicators Correlated to the needs and priority roles	FTF Priority Roles in the Early Childhood System	SFY 2013-2015 Strategies
<p>School Readiness – Limited pre-school opportunities, parents need education about preparing children for school</p> <p>Children w/Disabilities – lack of therapy services, early identification of special needs</p> <p>Access to affordable Quality Child Care – High Unemployment/ Poverty rates, more/Family, Friend and Neighbor Care</p> <p>Parent’s awareness of the needs of young children.</p>	<p>#/% children demonstrating school readiness at kindergarten entry in the development domains of social-emotional, language and literacy, cognitive, and motor and physical</p> <p>#/% of children with special needs/rights enrolled in an inclusive early care and education program with a Quality First rating of 3-5 stars</p> <p>#/% of children receiving well child visits</p> <p>#/% of children ages 2-5 at a healthy weight (Body Mass Index-BMI)</p> <p>#/% of children age 5 with untreated tooth decay</p> <p>% of families who report they are competent and confident about their ability to support their child’s safety, health and well being</p>	<p>Quality, Access, and Affordability of Regulated Early Care and Education Settings – Convene partners, provide leadership, and provide funding for increased availability of and access to high quality, regulated, culturally responsive and affordable early care and education programs.</p> <p>Access to Quality Health Care Coverage and Services – Collaborate with partners to increase access to high quality care services (including oral health and mental health) and affordable health care coverage for young children and their families</p> <p>Professional Development System – Convene partners, provide leadership, and provide funding for the development and enhancement of an early childhood professional development system that addresses availability, accessibility, affordability, quality, and articulation.</p> <p>Supports and services for families – Convene partners, provide leadership, provide funding, and advocate for development, enhancement, and sustainability of a variety of high quality, culturally responsive, and affordable services, supports, and community resources for young children and their families.</p>	<p>Quality First (including CCHC, TEACH and Scholarships)</p> <p>Scholarship-non TEACH</p> <p>Inclusion of Children with Special Need</p> <p>Family Support–Children with Special Needs</p> <p>Community Based Professional Development Early Care and Education Professionals</p> <p>Oral Health</p> <p>Family, Friends and Neighbors</p> <p>Mental Health Consultation</p> <p>Home Visitation</p> <p>Food Security</p> <p>Parent Education Community Based Training</p> <p>Expansion: Increase slots and/or capitol expense</p> <p>Reach Out and Read</p> <p>Parent Outreach and Awareness</p> <p>Community Awareness</p> <p>Community Outreach</p> <p>Media</p> <p>Statewide Evaluation</p>



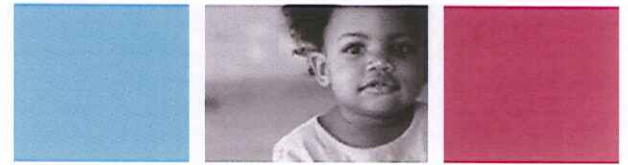
Conclusion SFY14

Workgroup Recommendations:

- Continue with the strategic direction of the funding plan and expanding or enhancing strategies/programs that may benefit from enhancements
- Have a support system in place for sites with Pre-K scholarships to obtain a minimum of a 3 star rating. Allowing continued access to affordable quality child care.

Discussion

- Building the Early Childhood System:
- Improving coordination of services for families and children in need and ensuring strategies are being used to their fullest potential or to enhance the strategies to reach the desired indicators.
- Building a support system that is aligned/supportive of school readiness indicators
- Collaboration within and outside First Things First partnerships.



Conclusion SFY15

Workgroup Recommendations:

- Continue with the strategic direction of the funding plan (SFY13-15). Allowing for our system to maintain.
- Moving our Pre-K sites back to rating only that were in the support system (full QF participation).
 - Maintaining the current access to affordable quality child care.

Discussion

- Enhancing the Early Childhood System: Use the data and narrative reports from current three year funding plan to identify our investments impact. These reports will also support the future direction of our SFY16-18 funding plan.
- (Family Service Guide) Improving coordination of services for families and children in need and ensuring strategies are being used to their fullest potential or to enhance the strategies to reach the desired indicators.
- Move forward with collaboration within and outside First Things First partnerships.
- Targeted relationship building with business and faith based.



Original Funding Plan Summary

Allocations and Funding Sources	2013	2014	2015
FY Allocation		\$5,261,084	\$5,025,798
Population Based Allocation		\$2,973,410	\$2,891,013
Discretionary Allocation		\$1,729,753	\$1,642,870
Other (FTF Fund balance addition)		\$557,921	\$491,915
Carry Forward From Previous Year		\$4,182,413	\$4,163,661
Total Regional Council Funds Available		\$9,443,497	\$9,189,459

Strategies	Allotted	Awarded	Expended	Allotted	Awarded	Expended	Proposed Allotment
Child Care Health Consultation	\$85,680	\$85,462	\$81,855	\$91,126	\$91,126	\$24,412	\$85,113
Community Awareness	\$35,000	\$35,000	\$5,512	\$35,000	\$35,000	\$3,419	\$35,000
Community Based Professional Development Early Care and Education	\$100,000	\$100,000	\$99,915	\$200,000	\$200,000		\$200,000
Community Outreach	\$83,000	\$83,000	\$68,558	\$83,000	\$83,000	\$23,415	\$83,000
Expansion: Increase slots and/or capital expense	\$15,000	\$15,000	\$9,057	\$15,000	\$15,000	\$558	\$15,000
Family Support – Children with Special Needs	\$280,000	\$279,980	\$277,547	\$280,000	\$280,000	\$50,413	\$280,000
Family, Friends & Neighbors	\$157,956	\$157,956	\$133,346	\$150,000	\$150,000	\$23,859	\$150,000
Food Security	\$50,000	\$50,000	\$37,100	\$50,000	\$50,000	\$24,981	\$50,000
Home Visitation	\$1,458,774	\$1,196,747	\$1,143,686	\$1,458,774	\$1,184,583	\$223,149	\$1,458,774
Inclusion of Children with Special Needs	\$230,991	\$230,942	\$229,970	\$230,991	\$230,989	\$38,643	\$230,991
Media	\$109,263	\$109,263	\$109,263	\$89,263			\$109,263
Mental Health Consultation	\$123,000	\$123,000	\$92,437	\$123,000	\$123,000	\$28,820	\$123,000
Needs and Assets				\$25,000	\$18,865	\$1,560	
Oral Health	\$303,266	\$303,266	\$239,449	\$303,266	\$303,266	\$75,817	\$303,266

Parent Education Community-Based Training	\$150,000	\$150,000	\$145,591	\$190,000	\$190,000		\$150,000
Parent Outreach and Awareness				\$20,000		\$8,929	
Quality First	\$578,843	\$513,127	\$456,670				\$439,185
Quality First Academy				\$39,849	\$24,797	\$3,485	
Quality First Child Care Health Consultation Warmline				\$1,840	\$1,840		
Quality First Coaching & Incentives				\$446,127	\$446,127	\$222,924	
Quality First Inclusion Warmline				\$6,638	\$6,638	\$1,108	
Quality First Mental Health Consultation Warmline				\$6,828	\$6,828	\$1,712	
Quality First Pre-K Mentoring				\$60,060	\$60,060	\$30,027	
Quality First Pre-K Scholarships	\$1,198,000	\$1,180,803	\$1,161,878	\$952,644	\$952,644	\$476,272	\$1,302,048
Quality First Scholarships	\$970,054	\$970,054	\$712,292	\$1,018,420	\$1,018,420	\$509,781	\$885,089
Quality First Warmline Triage				\$2,655	\$2,655	\$666	
Reach Out and Read	\$104,049	\$102,554	\$101,924	\$100,000	\$100,000	\$24,998	\$100,000
Recruitment – Stipends/Loan Forgiveness	\$131,605	\$129,650	\$70,981	\$87,330	\$87,330	\$21,829	
Scholarships non-TEACH	\$55,000	\$55,000	\$44,220	\$55,000	\$55,000		\$55,000
Scholarships TEACH	\$52,800	\$52,800	\$29,873	\$52,800	\$52,800	\$9,422	\$52,800
Statewide Evaluation	\$144,955	\$144,955	\$28,712	\$267,233	\$267,233	\$267,233	\$346,148
To Be Determined						(\$2,317)	
Total	\$6,417,236	\$6,068,559	\$5,279,836	\$6,441,844	\$6,037,201	\$2,095,114	\$6,453,677
Total Unallotted	\$3,026,261	\$348,677	\$788,723	\$2,747,615	\$404,643	\$3,942,087	\$2,002,488

**Funding Plan Summary
Workgroup Recommendations**

Allocations and Funding Sources	2013			2014			2015
FY Allocation		\$5,261,084			\$5,025,798		\$5,064,366
Population Based Allocation		\$2,973,410			\$2,891,013		\$2,917,001
Discretionary Allocation		\$1,729,753			\$1,642,870		\$1,641,457
Other (FTF Fund balance addition)		\$557,921			\$491,915		\$505,907
Carry Forward From Previous Year		\$4,182,413			\$4,163,661		\$3,391,800
Total Regional Council Funds Available		\$9,443,497			\$9,189,459		\$8,443,265
Strategies	Allotted	Awarded	Expended	Allotted	Awarded	Expended	Proposed Allotment
Child Care Health Consultation	\$85,680	\$85,462	\$81,855	\$91,126	\$91,126	\$24,412	\$83,980
Community Awareness	\$35,000	\$35,000	\$5,512	\$35,000	\$35,000	\$3,419	\$35,000
Community Based Professional Development Early Care and Education Community Outreach	\$100,000	\$100,000	\$99,915	\$200,000	\$200,000		\$200,000
Expansion: Increase slots and/or capital expense	\$83,000	\$83,000	\$68,558	\$83,000	\$83,000	\$23,415	\$83,000
Expansion: Increase slots and/or capital expense	\$15,000	\$15,000	\$9,057	\$15,000	\$15,000	\$558	\$15,000
Family Support – Children with Special Needs	\$280,000	\$279,980	\$277,547	\$280,000	\$280,000	\$50,413	\$280,000
Family, Friends & Neighbors	\$157,956	\$157,956	\$133,346	\$150,000	\$150,000	\$23,859	\$150,000
Food Security	\$50,000	\$50,000	\$37,100	\$62,900	\$62,900	\$24,981	\$50,000
Home Visitation	\$1,458,774	\$1,196,747	\$1,143,686	\$1,458,774	\$1,184,583	\$223,149	\$1,458,774
Inclusion of Children with Special Needs	\$230,991	\$230,942	\$229,970	\$230,991	\$230,989	\$38,643	\$230,991
Media	\$109,263	\$109,263	\$109,263	\$89,263			\$89,263
Mental Health Consultation	\$123,000	\$123,000	\$92,437	\$123,000	\$123,000	\$28,820	\$123,000
Needs and Assets				\$25,000	\$18,865	\$1,560	0
Oral Health	\$303,266	\$303,266	\$239,449	\$303,266	\$303,266	\$75,817	\$303,266
Parent Education Community-Based Training	\$150,000	\$150,000	\$145,591	\$190,000	\$190,000		\$150,000
Parent Outreach and Awareness				\$20,000		\$8,929	\$20,000
Quality First	\$578,843	\$513,127	\$456,670				
Quality First Academy				\$39,849	\$24,797	\$3,485	\$38,540
Quality First Child Care Health Consultation Warmline				\$1,840	\$1,840		\$1,598
Quality First Coaching & Incentives				\$446,127	\$446,127	\$222,924	\$359,616
Quality First Inclusion Warmline				\$6,638	\$6,638	\$1,108	\$7,140
Quality First Mental Health Consultation Warmline				\$6,828	\$6,828	\$1,712	\$7,344
Quality First Pre-K Mentoring				\$60,060	\$60,060	\$30,027	\$60,060
Quality First Pre-K Scholarships	\$1,198,000	\$1,180,803	\$1,161,878	\$952,644	\$952,644	\$476,272	
Quality First Scholarships	\$970,054	\$970,054	\$712,292	\$1,018,420	\$1,018,420	\$509,781	\$2,682,148
Quality First Warmline Triage				\$2,655	\$2,655	\$666	\$2,584
Reach Out and Read	\$104,049	\$102,554	\$101,924	\$100,000	\$100,000	\$24,998	\$100,000
Recruitment – Stipends/Loan Forgiveness	\$131,605	\$129,650	\$70,981	\$87,330	\$87,330	\$21,829	0
Scholarships non-TEACH	\$55,000	\$55,000	\$44,220	\$55,000	\$55,000		\$55,000
Scholarships TEACH	\$52,800	\$52,800	\$29,873	\$52,800	\$52,800	\$9,422	\$49,746
Statewide Evaluation	\$144,955	\$144,955	\$28,712	\$267,233	\$267,233	\$267,233	\$346,148
To Be Determined						(\$2,317)	
Total	\$6,417,236	\$6,068,559	\$5,279,836	\$6,454,744	\$6,050,101	\$2,095,114	\$6,982,198
Total Unallotted	\$3,026,261	\$348,677	\$788,723	\$2,734,715	\$391,743	\$3,942,087	\$1,461,067