

Cocopah Tribe Regional Partnership Council

Allocations and Funding Sources	SFY13	
FY Allocation	\$81,765	
Population Based Allocation	\$19,118	
Discretionary Allocation	\$58,326	
Other (FTF Fund balance addition)	\$4,321	
Carry Forward From Previous Year	\$25,607	
Total Regional Council Funds Available	\$107,372	
Strategies	Proposed Allotments	Board Approvals, 1/17-18, 2012 SFY13 Strategies and Amounts
Home Visitation	\$69,182	Approved
Food Security	\$750	Approved
Parent Outreach and Awareness	\$11,674	Approved
Quality First (<i>Statewide</i>)	\$7,777	Approved
Statewide Evaluation (<i>Statewide</i>)	\$955	Approved
Proposed Allotment Total:	\$90,338	
Total Unallotted	\$17,034	



**COCOPAH TRIBE
REGIONAL PARTNERSHIP COUNCIL**

**Regional Funding Plan
Three Year Strategic Direction
SFY 2013-2015**

COCOPAH TRIBE REGIONAL PARTNERSHIP COUNCIL

**Regional Funding Plan
Three Year Strategic Direction
SFY 2013-2015**

- I. Regional Allocation Summary**
Funds Available State Fiscal Years (SFY) 2012- 2015

- II. Review of SFY 2012 Funding Plan**
 - A. Review of SFY 2012 Priorities
 - B. Strategies and Units of Service Review
 - C. Funding Summary Review
 - D. Review of Progress

- III. Three Year Strategic Direction: SFY 2013-2015 Regional Funding Plan**
 - A. Overview: Setting the Strategic Direction
 - B. Regional Priorities, Selected FTF Indicators and Priority Roles, and Strategies to Achieve Outcomes
 - C. Strategy Descriptions including Target Populations and Funding Levels
 - D. Proposed Funding Summary
SFY 2013 -2015 Regional Partnership Council Budget

Section I.**Regional Allocation Summary**

Funds Available State Fiscal Years (SFY) 2012- 2015

Cocopah Tribe Regional Partnership Council

Allocations and Funding Sources	2012	2013	2014	2015
FY Allocation	\$83,784	\$81,765	\$81,929	\$82,236
Population Based Allocation	\$19,619	\$19,118	<i>(fy14 and fy15 allocations are estimates only, for purposes of planning)</i>	
Discretionary Allocation	\$61,110	\$58,326		
Other (FTF Fund balance addition)	\$3,055	\$4,321	\$81,929	\$82,236
Carry Forward From Previous	\$76,994	\$25,607	\$17,034	\$8,625
Total Regional Council Funds	\$160,778	\$107,372	\$98,963	\$90,861

Section II.

Review of SFY 2012 Funding Plan

II A. SFY 2012 Regional Partnership Council Priorities

The Cocopah Tribe region of First Things First consists of the Cocopah Indian Reservation which includes three noncontiguous bodies of land in the southwestern corner of Arizona bordering California and Mexico. The identified needs within the region are primarily related to the location of services available to the region. The Indian Health Services clinic and services are located on the Fort Yuma Reservation, which is 35 miles from the West Cocopah reservation, and the WIC program is available to families only one day a week. There is a serious need for early care programs and services for children younger than three years of age. The Cocopah Tribe Head Start has one classroom and serves 20 children from age three to five. Also, the Cocopah Day Care program provides care for children from age three to twelve; however the majority of the children attending the Day Care are school-aged. Resources and services available to parents with children birth to three are also lacking. An additional barrier that was identified is that in most cases a parent only had access to an intervention service after a problem had occurred. As a result the Cocopah Tribe Regional Partnership Council made it a priority to make available preventive and educational supports for families in the region. This acknowledgement of a preventive and universal access to programs has been the underlying current to the planning decisions of the Cocopah Tribe Regional Partnership Council over the last three years.

Currently in implementation, the SFY 2012 Cocopah Tribe Regional Partnership Council Funding Plan includes overarching strategies to raise awareness, build the trust of families, and continue progress toward the development of a regional system to include communication, collaboration and community awareness. These strategies help to build the foundation for services, engage and motivate the community around early childhood development and health, and support programs for families in the region without duplication of efforts. The Cocopah Tribe Regional Partnership Council has had a strategic direction focused on grounding the first steps of system building to allow children to enter school healthy and ready to succeed. The guiding vision from State Fiscal Years 2010 to 2012 was the building of a strong foundation from which to foster true collaboration and to provide both preventive and responsive services to the young children of the region.

II B. SFY 2012 Strategies and Units of Service Review

Cocopah Tribe Units of Service by Strategy

Strategy Description	Fiscal Year 2012	
	Targeted Units	Contracted Units
Home Visitation Strategy		
Number of families served	7	7
Food Security Strategy		
Number of food boxes distributed	50	100
Other Quality Support Strategy		
Number of center based providers served	1	1
Community Awareness		
No service units		
Statewide Evaluation		
No service units		

II C. SFY 2012 Funding Summary Review

FY 2012 Cocopah Tribe Funding Plan Summary

Allocations and Funding Sources	2012	
FY Allocation		\$83,784
Population Based Allocation		\$19,619
Discretionary Allocation		\$61,110
Other (FTF Fund balance addition)		\$3,055
Carry Forward From Previous Year		\$76,994
Total Regional Council Funds Available		\$160,778
Strategies	Allotted	Awarded
Home Visitation	\$69,182	\$69,182
Food Security	\$2,500	\$2,500
Other Quality Support	\$50,860	\$50,860
Community Awareness	\$11,674	\$11,674
Statewide Evaluation	\$955	\$955
Total Allotted/Awarded:	\$135,171	\$135,171
Total	\$25,607	-

II D. Review of Progress

One of the most positive outcomes from Fiscal Year 2011 to 2012 is the capacity building that has occurred in the region with the early childhood programs implemented by First Things First. All programs are now being fully implemented in Fiscal Year 2012. With a relatively small amount of funding compared to the high need and highest level of poverty out of any other First Things First regional area, the Cocopah Tribe Regional Partnership Council focused on the high priority needs. The strategies implemented by the Cocopah Tribe Regional Partnership Council are designed to work together to address the high priorities and ensure comprehensive, wrap-around support for families and caregivers.

The multi-component Home Visitation strategy developed by the Regional Partnership Council has begun to show results in the form of individual success stories, more collaboration between programs, and increased access to resources and services from off the reservation. Fiscal Year 2012 brought Parents as Teachers in to the region, and for the first time, parents are receiving preventive and non-mandated support services with a curriculum and education plans specifically designed to meet the needs of each child and their families. To provide wrap-around family support, this strategy includes two components in addition to the home visitation services. Parent education through group, community-based trainings, is a second component to the program, and has not been as successful as meeting parents and families one on one. The third component is training and support for family, friend and neighbor caregivers. Through a partnership with the Yuma Regional Partnership Council, a community-based training cohort for Family, Friend and Neighbor caregivers is being conducted in the Cocopah Tribe regional area and is supported by funding from the Yuma Regional Partnership Council. The Cocopah home visitation grantee is conducting the recruitment for this cohort which will begin in February 2012. The progress with the multiple components of the Home Visitation strategy has been achieved through a partnership with the Cocopah Indian Tribe. The Regional Partnership Council allotted funds to serve seven families through the multi-component Home Visitation strategy in Fiscal Year 2012, and that target is being exceeded with ten families, including 11 children age one and younger, currently receiving comprehensive services by this strategy.

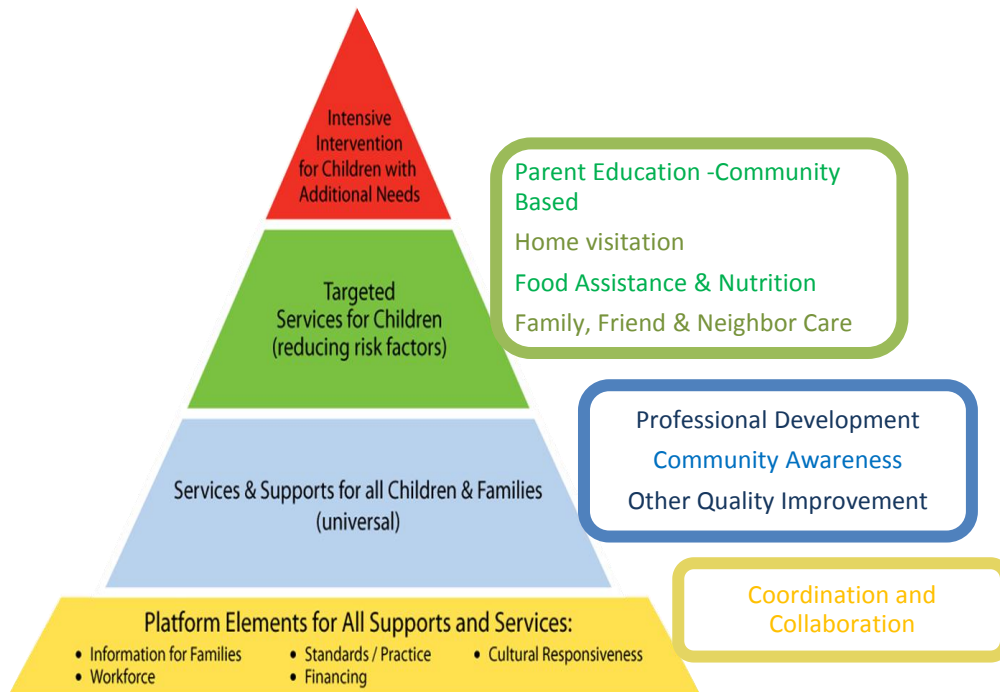
The Regional Partnership Council has remained focused on the need to increase community awareness, education and support for early childhood development. In a small community, rich in a tradition of oral communication and community gathering, the most impactful way to raise awareness of important issues is to participate in community events. Recognizing this, the Regional Partnership Council has made it a priority for the early childhood message to be a part of community events attracting young families. Fiscal Year 2012 outreach in the community is continuous, and ongoing plans include a Talking Circle with parents and grandparents to take place in January 2012, and participation in the Cocopah Community Housing Exposition in April 2012, where hundreds of families will attend. Community outreach in the region is also supported by the Community Outreach Coordinator through a cross-regional collaboration with the Yuma Regional Partnership Council.

With all of the region's children attending the Cocopah Head Start prior to entering kindergarten, the Cocopah Tribe Regional Partnership Council developed a quality improvement strategy that has the potential to make a universal impact in the region. Of the region's children birth through age five, over 75%, or 65 children, are living below the federal poverty level. The Cocopah Head Start serves 20 of those children each year, mainly having to prioritize those children who would be enrolling in kindergarten the following year. There is a great need to improve quality and ensure a safe learning environment for the children attending the Cocopah Head Start program. The Regional Partnership Council's Quality

Improvement strategy is being implemented with one-time funding, with supported funds from the Cocopah Indian Tribe as well as Head Start maintenance funds, to improve the quality of the learning environment of the Cocopah Head Start.

In Fiscal Year 2010, the Cocopah Head Start was enrolled in Quality First through statewide funds. The Cocopah Head Start program has been fully engaged in the components of quality improvement and has made significant progress with Quality First. Professional Development early education staff in the region is an identified need of the Regional Partnership Council; however there are no TEACH scholarships being utilized at this time. Although professional development has been a prioritized need, sporadic outreach and recruitment, high staff turnover in the Head Start program, and limited availability of the early education staff, have been the major contributing factors to the TEACH scholarships not being a utilized for professional development.

Used in developing the funding plan for Fiscal Year 2012, the pyramid below depicts the reach of the strategies implemented by the Cocopah Tribe Regional Partnership Council from Fiscal Years 2010 - 2012.



Section III.

Three Year Strategic Direction: SFY 2013-2015 Regional Funding Plan

III A. Overview

The strategic planning process for the Cocopah Tribe Regional Partnership Council occurred through careful consideration of the implementation and impact of strategies over the last three years, discussion on the information made available in the 2010 Needs and Assets Assessment, and a refined focus on integrating existing resources. Building on the foundation set, the approach moving forward is based on the concept of universal implementation, with the most comprehensive approach aimed at families with infants and toddlers. Priority is placed on educating the parents and caregivers in order to move toward a collective, general understanding and recognition of the importance of early childhood.

Setting the Strategic Direction

The Regional Partnership Council is building on their efforts from Fiscal Years 2010 – 2012, and has prioritized the following needs to address: 1) Parent education and family support that is culturally sensitive and specific to the needs of families and caregivers, and 2) Access to high quality early care and education. With a mission to define the characteristics of a child who is “ready” for school, the Cocopah Tribe Regional Partnership Council analyzed the strengths and needs of the region through the lens of a school readiness trajectory chart. The Regional Partnership Council identified that their vision of children “ready” for school is that they are healthy, happy and safe. To accomplish this, all parents will receive early and continuous prenatal care, have healthy births, and have access to family support and involvement, and children will have access to developmental screenings and immunizations, supportive home environments with nutritious food, and participation in high quality early education/pre-kindergarten setting.

To address these needs, the Cocopah Tribe Regional Partnership Council’s strategic direction for Fiscal Years 2013-2015 aligns within the two First Things First priority role areas. With the first priority being Supports and Services for Families, the Regional Partnership Council will continue funding the Home Visitation strategy which includes the three components of home visitation through the Parents as Teachers model, parent education in group settings, and skill development for Family, Friend and Neighbor caregivers. The Regional Partnership Council will also continue support families through the Food Security strategy, and has added a Parent Awareness and Outreach strategy to raise the overall awareness of parents in the region on specific early childhood topics. The Regional Partnership Council recognizes the importance of high quality early care and education, and is addressing the second priority through community-based training for the Family, Friend and Neighbor caregivers of infants and toddlers, and will continue building on the progress of the Cocopah Head Start through the Quality First – Rating Only strategy.

Supports and Services for Families

The 2010 Needs and Assets Assessment identified inadequate prenatal and early childhood health care. With resources available, such as the Indian Health Services, WIC, and the Tribal Health and Maintenance Programs, assistance needs to be provided to connect families to those existing health resources. Keeping children safe from abuse was reported in the 2007 Cocopah Head Start Survey as a high concern, and the need also arose to the top during the Funding Plan Community Meeting in September 2011. There is no

regulated care in the region for infants and toddlers, and many parents rely on family, friends, or neighbors to care for their young children. The Regional Partnership Council continues to prioritize the home visitation strategy to address the need for supports and services for families through the three components of home visitation, parent education, and family caregiver training. The Parent Outreach and Awareness strategy will expand the reach of the early childhood system efforts by educating parents on the importance of a healthy start in life and connecting those families with the available services.

Quality, Access and Affordability of Regulated Early Care and Education Settings

To address the second priority, recognizing that the Cocopah Head Start has been fully engaged in Quality First through the statewide allotment, the Regional Partnership Council is using the funds they have available to support Quality First –Rating Only participation. A community challenge identified in the 2010 Needs and Assets Assessment was the lack of early care and education options on the Cocopah Indian reservation. The Regional Partnership Council recognizes the great need of increasing the quality of the early care and education that is available, and that is through the Cocopah Head Start serving 20 children. The Regional Partnership Council is building on the strengths that exist, and adhering to the universal concept, have strategically set out to raise the quality of early care and education provided at the Head Start- where almost 100% of the Cocopah children attend prior to kindergarten entry.

Strategic Approach to System Building

When thinking about scope and reach, there is a consensus among the Cocopah Tribe Regional Partnership Council that all resources should be available to all families, and should be tailored to meet each family's individual needs. The focus remains on preventive strategies with opportunities for each strategy to be brought to scale and implemented universally. The Regional Partnership Council's approach with these strategies is to span along the continuum, extending from the narrower scope of supporting families' at the most basic level by providing food assistance during hardship, through the more comprehensive strategy providing home visitation services to all willing families of newborns and toddlers. The Regional Partnership Council recognized that, to gain momentum in system building, more education needs to be disseminated widely among parents and caregivers in the community. This is a crucial component so that parents understand the critical importance of the experiences their children have in the early years.

With a majority of regional funding allotted to the comprehensive home visitation strategy, collaboration with the Yuma Regional Partnership Council remains an important factor, and will carry forward in to Fiscal Year 2013 through leadership and ongoing meetings between the Chairs and Vice Chairs of both Regional Partnership Councils. The Cocopah Tribe Regional Partnership Council determined that providing support to new parents and education to Family, Friend and Neighbor caregivers was an essential element of preparing children for school. Based on the success of the community-based training cohort being conducted in the Cocopah Tribe regional area through a partnership with the Yuma Regional Partnership Council, future opportunities for this type of collaboration will be developed. Additionally, while not prioritized as the highest need, the Regional Partnership Council recognizes the value of community outreach, and will continue in a cross-regional effort with the Yuma Regional Partnership Council to build the awareness of the importance of early childhood.

Purpose and meaning will be given to the system building effort, as parent awareness increases while simultaneously making known the level of quality provided by the early care and education settings available to families in the region.

Section III B.

Strategic Plan for SFY 2013 – 2015

Regional Priorities, Selected FTF Indicators and Priority Roles, and Strategies to Achieve Outcomes

Regional Priority to be addressed	School Readiness Indicators Correlated to the needs and priority roles	FTF Priority Roles in the Early Childhood System	SFY 2013-2015 Strategies
<p>Parent education and family support that is culturally sensitive and specific to the needs of families and caregivers.</p> <p>Access to high quality early care and education.</p>	<p>#/% children demonstrating school readiness at kindergarten entry in the development domains of social-emotional, language and literacy, cognitive, and motor and physical</p> <p>% of families who report they are competent and confident about their ability to support their child’s safety, health and well being</p> <p>#/% of children enrolled in an early care and education program with a Quality First rating of 3-5 stars</p>	<p>Supports and Services for Families - Convene partners, provide leadership, provide funding, and advocate for development, enhancement, and sustainability of a variety of high quality, culturally responsive, and affordable services, supports, and community resources for young children and their families. <i>FS&L-2</i></p> <p>Quality, Access, and Affordability of Regulated Early Care and Education Settings – Convene partners, provide leadership, and provide funding for increased availability of and access to high quality, regulated, culturally responsive and affordable early care and education programs. <i>EL-3</i></p>	<p>Home Visitation</p> <p>Food Security</p> <p>Parent Outreach and Awareness*</p> <p>Quality First (rating only)*</p> <p>Statewide Evaluation</p> <p>(*) Indicates new strategy for this Regional Partnership Council</p>

Section III C.

Strategy Descriptions including Target Populations and Funding Levels

Strategy: Home Visitation			
Strategy Description			
Provides voluntary in-home services for infants, children and their families, focusing on parenting skills, early physical and social development, literacy, health and nutrition. Connect families to resources to support their child’s health and early learning.			
Strategy Narrative			
<p>The Home Visitation strategy seeks to give parents stronger, more supportive relationships with their children through in-home services on a variety of topics, including parenting skills, early childhood development, literacy and health, and also by connecting parents and caregivers with community resources to help them better support their child’s health and early learning. The primary goal of home visiting services is to promote effective parenting and bring services to families that may be geographically or socially isolated. When delivered well, home visiting services convey great respect for families because they indicate that the service system is coming to the family rather than the other way around.</p> <p>The important characteristic of this strategy is that a culturally competent in-home visitor, who is trained in child development and physically located in the region, makes regular, scheduled visits to homes with expectant families and families with infants, or with young children, to provide information and resources and assist parents in their parenting skills. Parents will be guided through a developmental screening tool (i.e. Ages & Stages Questionnaire) that is conducted someplace where the child and parents feel comfortable, and parents will be asked questions regarding their observations of their child’s development; upon receiving the results of the screening, support and education is provided to parents which includes referrals and ways to advocate for their child.</p> <p>The home visitation strategy requires a partnership with Indian Health Services, Yuma Regional Medical Center, Cocopah Tribal departments, and other surrounding community services so that referrals are made that increase families’ access to appropriate community resources. Additionally, regular group meetings are conducted for all parents, grandparents, and family caregivers, to provide an opportunity for families to meet, share issues around parenting, and receive education on child development topics in a community-based setting. It is a high priority of the Regional Partnership Council that the Home Visitation is carried out as preventive, voluntary and non-mandated.</p>			
Target Population Description			
The target population is expecting parents and parents or caregivers of infants and toddlers who live in the Cocopah region. With an average of 11 babies born each year in the region, this strategy has the potential of universal implementation by reaching all families in need of services within the target population.			
Target Service Units	FY 13	FY 14	FY 15
Number of families served	10	10	10
Funding Level	FY 13	FY 14	FY 15
	\$69,182	\$69,182	\$69,182

Strategy: Food Security			
Strategy Description Distribute food boxes and basic necessity items to families in need of assistance who have children birth to 5 years old.			
Strategy Narrative The Food Security Strategy seeks to improve the health and nutrition of children by increasing access to nutritious food for children ages birth through five and their families. Enhanced coordination with the local community resources to assist families in reaching stability and education on the nutritional needs of young children are essential elements to making an impact and promoting lifelong health for the children in the region. In order to implement the strategy successfully, the partnership must be maintained with the Cocopah Indian Tribe’s Community Center where families in the region access resources.			
Target Population Description The target population for this strategy is children ages one to five whose families are experiencing hardship and food insecurity. There are 60 children from birth to age five in the region, and approximately 75% of those children are living below the federal poverty level. Coordination with other resources, such as the food commodity program and WIC program, will ensure eligible families are receiving other available services and supports. The Regional Partnership Council reduced the target service unit to 30 food boxes to align with the actual need as reflected in the number of boxes distributed in Fiscal Years 2010 and 2011.			
Target Service Units	FY 13	FY 14	FY 15
Number of food boxes distributed	30	30	30
Funding Level	FY 13	FY 14	FY 15
	\$750	\$750	\$750

Strategy: Parent Outreach and Awareness			
Strategy Description Provides families with education, materials and connections to resources and activities that promote healthy development and school readiness.			
Strategy Narrative The Regional Partnership Council recognized that more education is needed on a wide spread level among parents and caregivers in the region. This strategy seeks to improve child development by educating parents and connecting them to resources and activities that promote healthy growth and school readiness. To raise parent awareness, outreach will be conducted through community presentations and group sessions, and will relate to early childhood development and school readiness topics that are relevant to the region. The Regional Partnership Council will identify specific topic areas where an increase in broad parent awareness is needed in the region. For example, one issue that has been identified as a priority is concerning parent awareness of the impact of health and attendance on a child’s success in school. Through the Parent Outreach and Awareness strategy, general outreach and education to parents and caregivers will be provided in an effort to combat the high prevalence of lice and other communicable health issues that have been identified of young children in the region. This strategy is also developed for universal implementation to raise awareness of child development and health and the availability of resources, support and services so that parents and caregivers have the information and tools to support their child’s healthy growth and development.			
Target Population Description All parents and families with young children are the target for this strategy to elevate parent awareness on a universal level. Outreach will be conducted broadly and information will be presented during community events.			
Target Service Units	FY 13	FY 14	FY 15
Number of parents participating	60	60	60
Number of workshops held	3	3	3
Funding Level	FY 13	FY 14	FY 15
	\$11,674	\$11,674	\$11,674

Strategy: Quality First (Rating only)

Strategy Narrative
 Since FY2010, the Cocopah Head Start has been participating in Quality First through the statewide allotment. The Regional Partnership Council has recognized the benefit and impact that Quality First is making on addressing the quality and professional development needs of the Head Start. In FY2012, the Regional Partnership Council provided additional support to the Cocopah Head Start through a separate Quality Improvement strategy. It is a priority of the Regional Partnership Council to continue supporting this very important center in the region.

With limited funding, the “rating only” package will provide an opportunity for the Cocopah region to participate in the Quality First system, which will not only provide the Head Start with a Star Rating, but will also provide the Head Start with six months of coaching. The assessments and Star Rating present the opportunity for feedback, reflection and suggestions for quality improvement that will be a motivator to increase the level of quality and subsequently, the Star Rating of the program.

While full participation in Quality First would be ideal, this strategy is an important component in the early childhood system as it promotes quality early care and education experiences, and provides a measure for parents to be informed of their choices in the early care and education of their children.

Target Population Description
 The Cocopah Head Start serves almost 100% of the children from the region prior to kindergarten entry, and that one center is the target for this strategy. There are no regulated home based providers in the region.

Target Service Units - Quality First	FY 13	FY 14	FY 15
Number of center based providers served	1	1	1
Number of home based providers served	0	0	0
Funding Levels	FY 13	FY 14	FY 15
Quality First (Rating only)	\$7,777	\$7,777	\$7,777

Strategy: Statewide Evaluation			
Strategy Description			
Statewide evaluation includes the studies and evaluation work which inform the First Things First Board and the 31 Regional Partnership Councils. Examples are baseline Needs and Assets reports, specific focused studies, and statewide research and evaluation on the developing early childhood system.			
Strategy Narrative			
First Things First has, and is growing, a multi-level system of research and evaluation strategies designed to be responsive to the informational needs of varied stakeholder groups, including the First Things First Board, Regional Partnership Councils, and Arizona citizens. The research and evaluation system is designed to provide both depth and breadth of high quality information, from collecting programmatic data to evaluating the overall impact of the First Things First Early Childhood System model. The system provides a framework for conducting statewide and regional studies centered on identifying current and changing needs of families and children birth to five, and the impact of programs and strategies across all First Things First priority areas. The First Things First research and evaluation system is a knowledge building system, designed to advance the understanding of needs, activities, and effectiveness. Individually and collectively, research and evaluation strategies generate data and findings which can be used to identify trends and changes in school readiness indicators and therefore to support strategic planning and decision-making which promotes the health and well-being of young children.			
Target Service Units	SFY 13	SFY 14	SFY 15
No target service units identified for this strategy			
Funding Level	SFY 13	SFY 14	SFY 15
Statewide Evaluation	\$955	\$955	\$955

Section III D. Proposed Funding Summary

SFY 2013 - 2015 Regional Partnership Council Budget

**FY 2013 - 2015
Cocopah Tribe
Funding Plan Summary**

Allocations and Funding Sources	2013	2014	2015
FY Allocation	\$81,765	\$81,929	\$82,236
Population Based Allocation	\$19,118		
Discretionary Allocation	\$58,326		
Other (FTF Fund balance	\$4,321	\$81,929	\$82,236
Carry Forward From Previous	\$25,607	\$17,034	\$8,625
Total Regional Council Funds	\$107,372	\$98,963	\$90,861
Strategies	Proposed Allotment	Proposed Allotment	Proposed Allotment
Home Visitation	\$69,182	\$69,182	\$69,182
Food Security	\$750	\$750	\$750
Parent Outreach and Awareness	\$11,674	\$11,674	\$11,674
Quality First	\$7,777	\$7,777	\$7,777
Statewide Evaluation	\$955	\$955	\$955
Proposed Allotment Total:	\$90,338	\$90,338	\$90,338
Total Unallotted	\$17,034	\$8,625	\$523